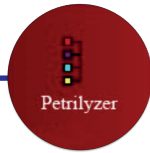
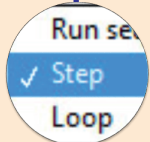


Petrylizer Quick Start Guide

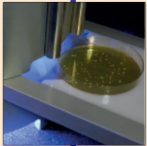


Start the Petrylizer program

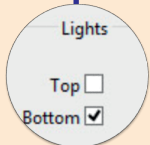
Setup of analysis:



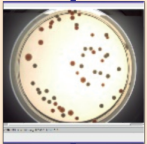
In the menu to the lower left select "Step"



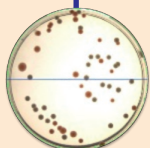
Insert a Petri-dish into the light box



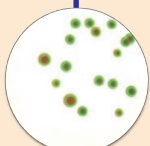
Start the setup: Adjust lighting



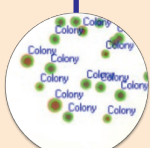
View image



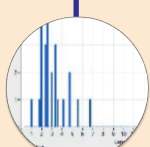
Mask to remove area outside of the petri-dish



Detect edges



Classify according to shape and colour



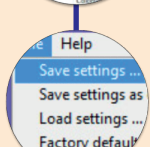
Set colony size limits

Species	ColonyR	ColonyG	Colony?
A_dank_354			
H_dank_354			
H_dank_354			

Results for current sample are shown

Species	ColonyHead	ColonyHead
001_1	ColonyHead	1
001_2	ColonyHead	1
001_3	ColonyHead	1
001_4	ColonyHead	1
001_5	ColonyHead	1
001_6	ColonyHead	1
001_7	ColonyHead	1
001_8	ColonyHead	1
001_9	ColonyHead	1
001_10	ColonyHead	1
001_11	ColonyHead	1
001_12	ColonyHead	1
001_13	ColonyHead	1
001_14	ColonyHead	1
001_15	ColonyHead	1
001_16	ColonyHead	1
001_17	ColonyHead	1
001_18	ColonyHead	1
001_19	ColonyHead	1
001_20	ColonyHead	1
001_21	ColonyHead	1
001_22	ColonyHead	1
001_23	ColonyHead	1
001_24	ColonyHead	1
001_25	ColonyHead	1
001_26	ColonyHead	1
001_27	ColonyHead	1
001_28	ColonyHead	1
001_29	ColonyHead	1
001_30	ColonyHead	1

Save data



Save settings

Routine analysis:



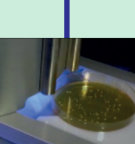
In the menu to the lower left select "Loop"



Load settings for the current analysis



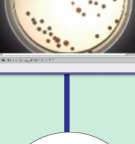
Start the analysis. Click the "Go" button



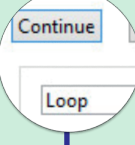
Insert a Petri-dish into the light box



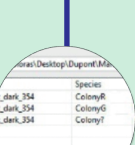
View image



Click "Continue"



Results are shown. Click "Continue"



No

Yes

